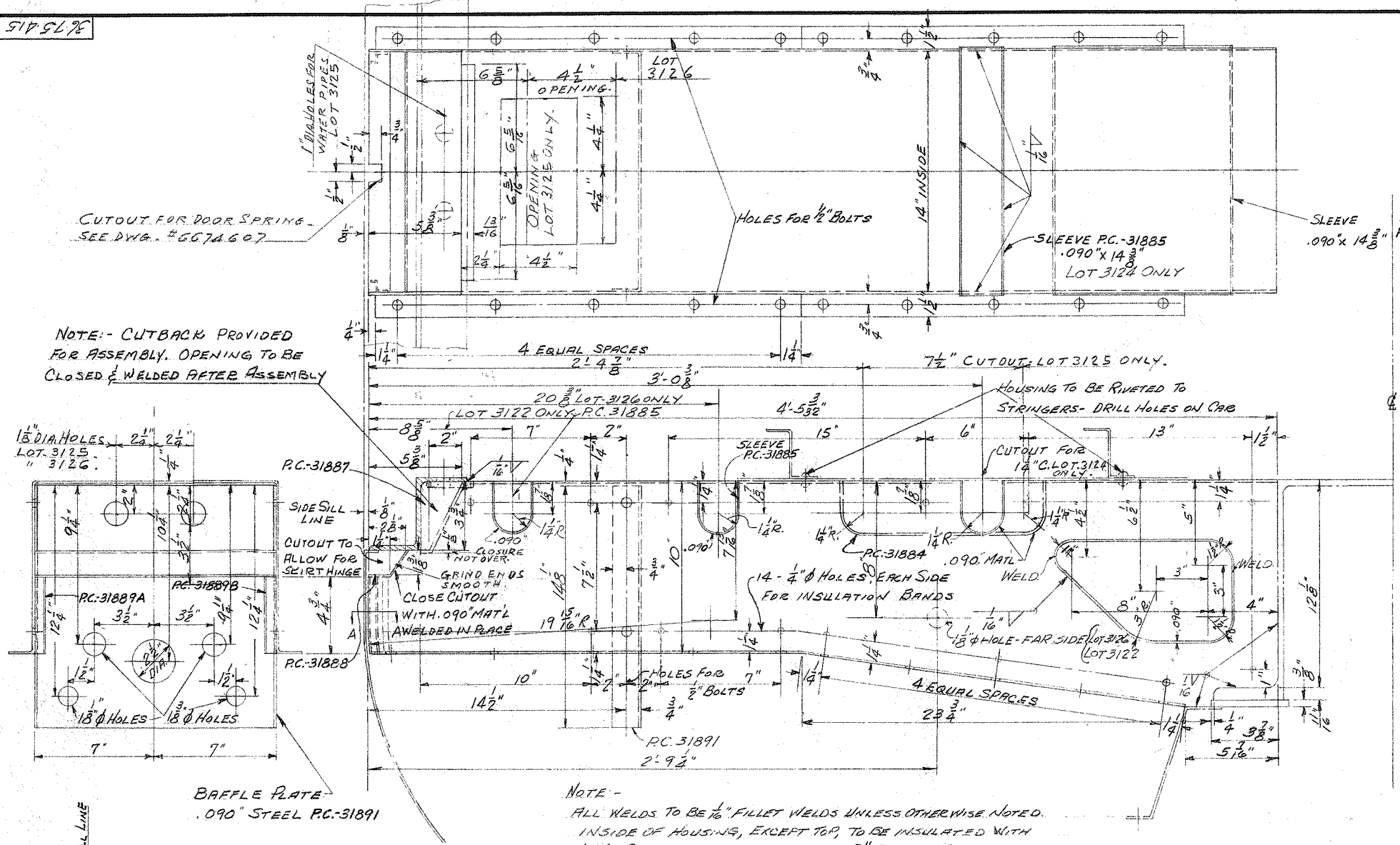
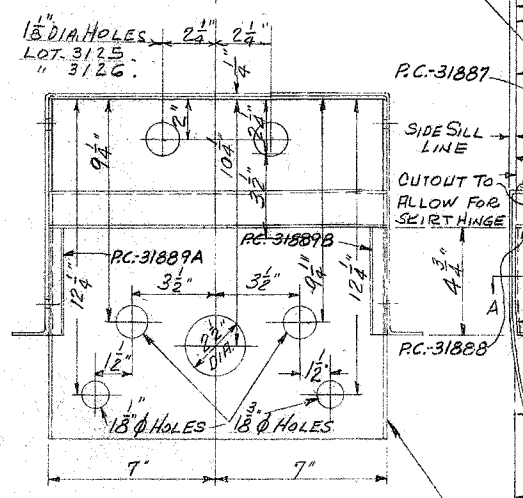


3675415

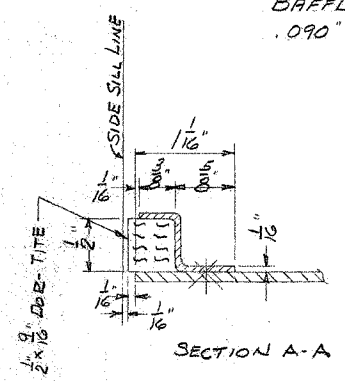


CUTOUT FOR DOOR SPRING - SEE DWG. #6674607

NOTE:- CUTBACK PROVIDED FOR ASSEMBLY. OPENING TO BE CLOSED & WELDED AFTER ASSEMBLY



BAFFLE PLATE .090" STEEL PC-31891



NOTE - ALL WELDS TO BE 1/16" FILLET WELDS UNLESS OTHERWISE NOTED. INSIDE OF HOUSING, EXCEPT TOP, TO BE INSULATED WITH J.M. STONEFELT INSULATION 2" THICK, FACED ON BOTH SIDES WITH WATER PROOF SIALDRAFT PAPER FOR HOUSING (OPP. SIDE) SEE DWG. #3675182 FOR HOUSING (LOWER HALF) SEE DWG. #3675416

INSULATION BANDS TO BE 1" WIDE x .048" STL.

SLEEVE PC-31885 .090" x 14 3/8" LOT 3124 ONLY

SLEEVE .090" x 14 3/8" PC-31882 PC-31883

@ CAR

PC-31881-D	1	3122
PC-31881-C	1	3126
PC-31881-B	1	3125
PC-31881-A	1	3124

SHOP MARK	No. PER CAR	LOT

MARK NO'S ADDED
OPENING ADDED - 3125-3126

AMERICAN CAR AND FOUNDRY CO.
3675415
HOUSING FOR WATER TANK PIPING
2-24-49 A.C.F.

.090" LAHT. STEEL

R. MILLS