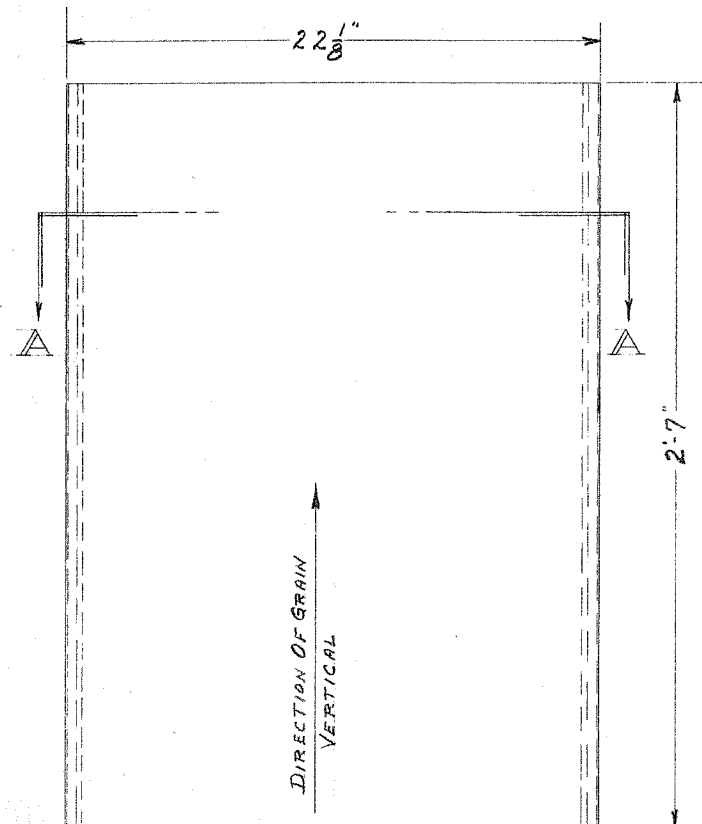
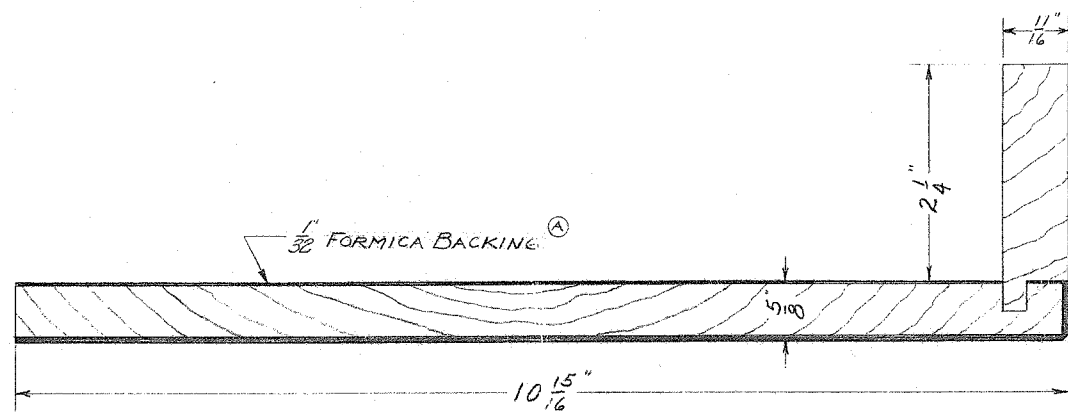


SECTION A-A



6-REQ'D PER CAR



END PIER  
4-REQ'D PER CAR

WALNUT REALWOOD FORMICA PIERS

PURCHASED

SHOP MARK	No. PER CAR	LOT	P.C. 3124
APD 6-24-49	A	CNGD 1/32 BLACK FORMICA TO FORMICA BACKING	A
AMERICAN CAR AND FOUNDRY CO.			
3675655			
FORMICA PIERS IN DINING ROOM COACH - CAFE			
A.C.F.			
3-28-49			