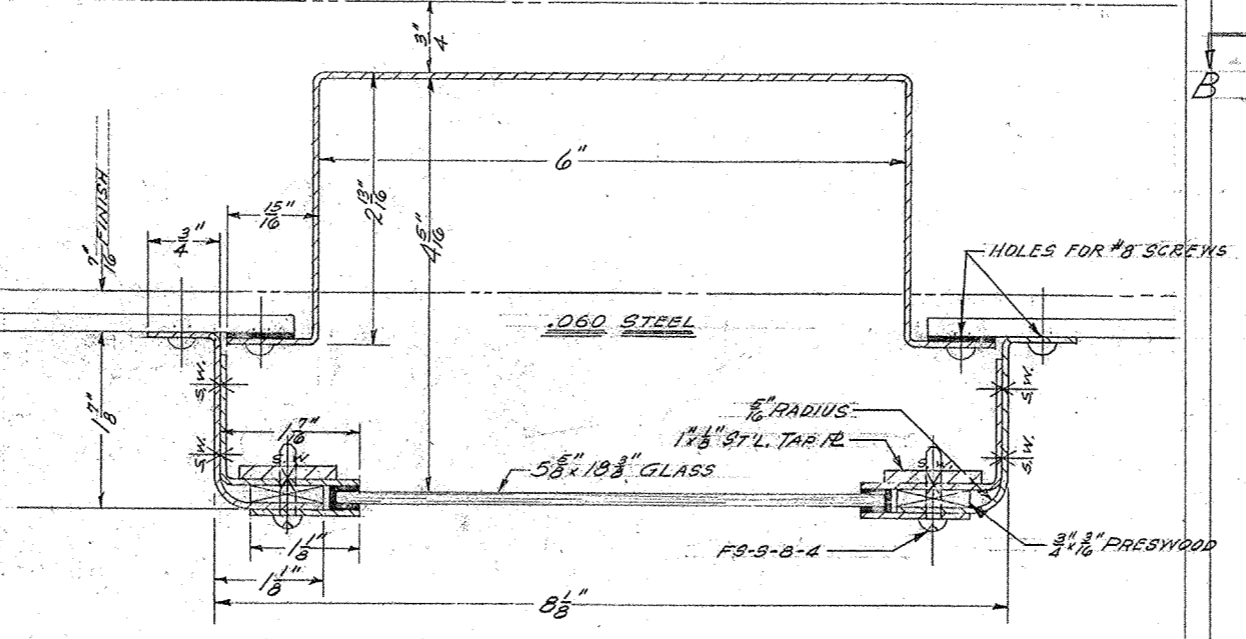
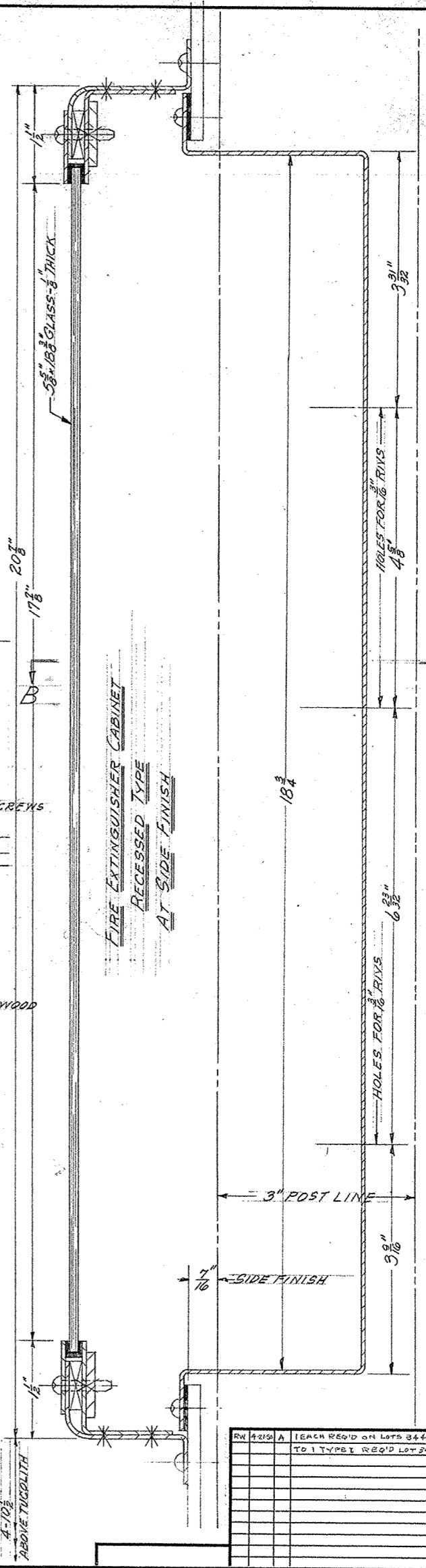


NOTE:
BOTH FLANGES ARE
LIKE THIS - LOTS 3126
3122-3444 & 3444A

SECTION A-A
TYPE 1



SECTION B-B
TYPE 2



FIRE EXTINGUISHER CABINET
RECESSED TYPE
AT SIDE FINISH

RW	REV	DESCRIPTION
4-10 1/2	A	TEACH REQ'D ON LOTS 3444-4444 CHANGS A
		TO 1 TYPE 1 REQ'D LOTS 3444-4444

TYPE	PC
TYPE 2	3446
TYPE 1	3447A
TYPE 1	3447A
TYPE 1	3447A
TYPE 2	3448
TYPE 1	3449
TYPE 1	3450
TYPE 1	3451
TYPE 1	3452
TYPE 1	3453
TYPE 1	3454
TYPE 1	3455
TYPE 1	3456
TYPE 1	3457
TYPE 1	3458
TYPE 1	3459
TYPE 1	3460
TYPE 1	3461
TYPE 1	3462
TYPE 1	3463
TYPE 1	3464
TYPE 1	3465
TYPE 1	3466
TYPE 1	3467
TYPE 1	3468
TYPE 1	3469
TYPE 1	3470
TYPE 1	3471
TYPE 1	3472
TYPE 1	3473
TYPE 1	3474
TYPE 1	3475
TYPE 1	3476
TYPE 1	3477
TYPE 1	3478
TYPE 1	3479
TYPE 1	3480
TYPE 1	3481
TYPE 1	3482
TYPE 1	3483
TYPE 1	3484
TYPE 1	3485
TYPE 1	3486
TYPE 1	3487
TYPE 1	3488
TYPE 1	3489
TYPE 1	3490
TYPE 1	3491
TYPE 1	3492
TYPE 1	3493
TYPE 1	3494
TYPE 1	3495
TYPE 1	3496
TYPE 1	3497
TYPE 1	3498
TYPE 1	3499
TYPE 1	3500

AMERICAN CAR AND FOUNDRY CO.
4675142
CABINETS FOR
FIRE EXTINGUISHERS
1-15-49
a.c.f.