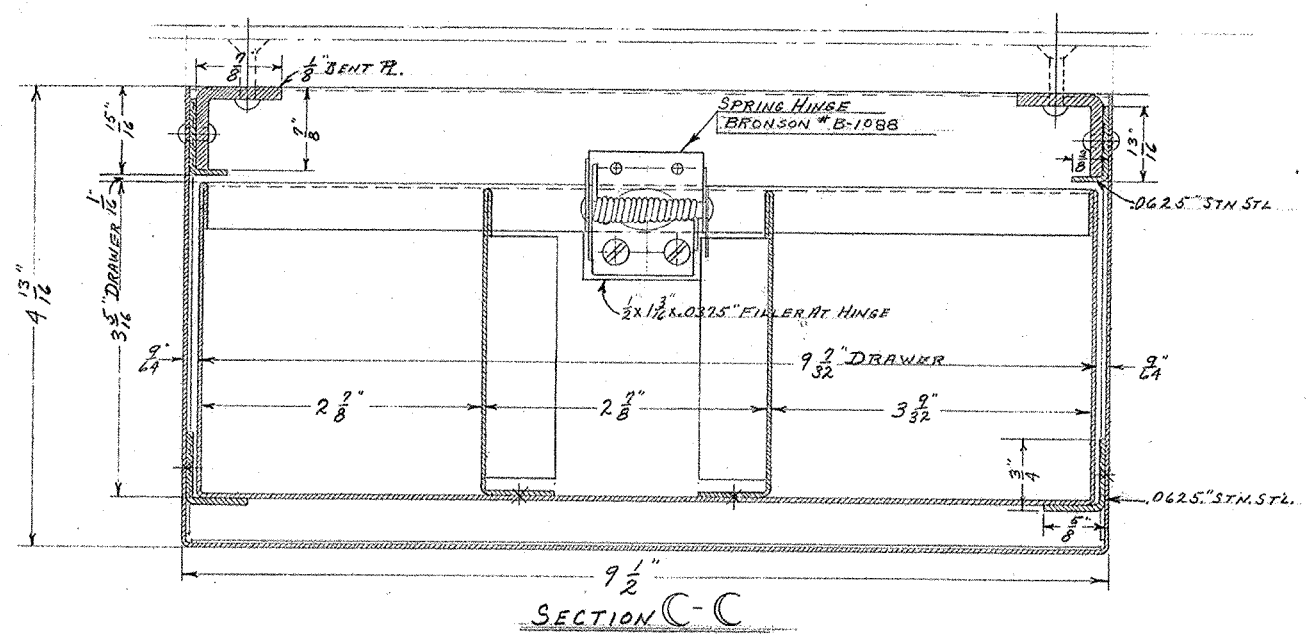
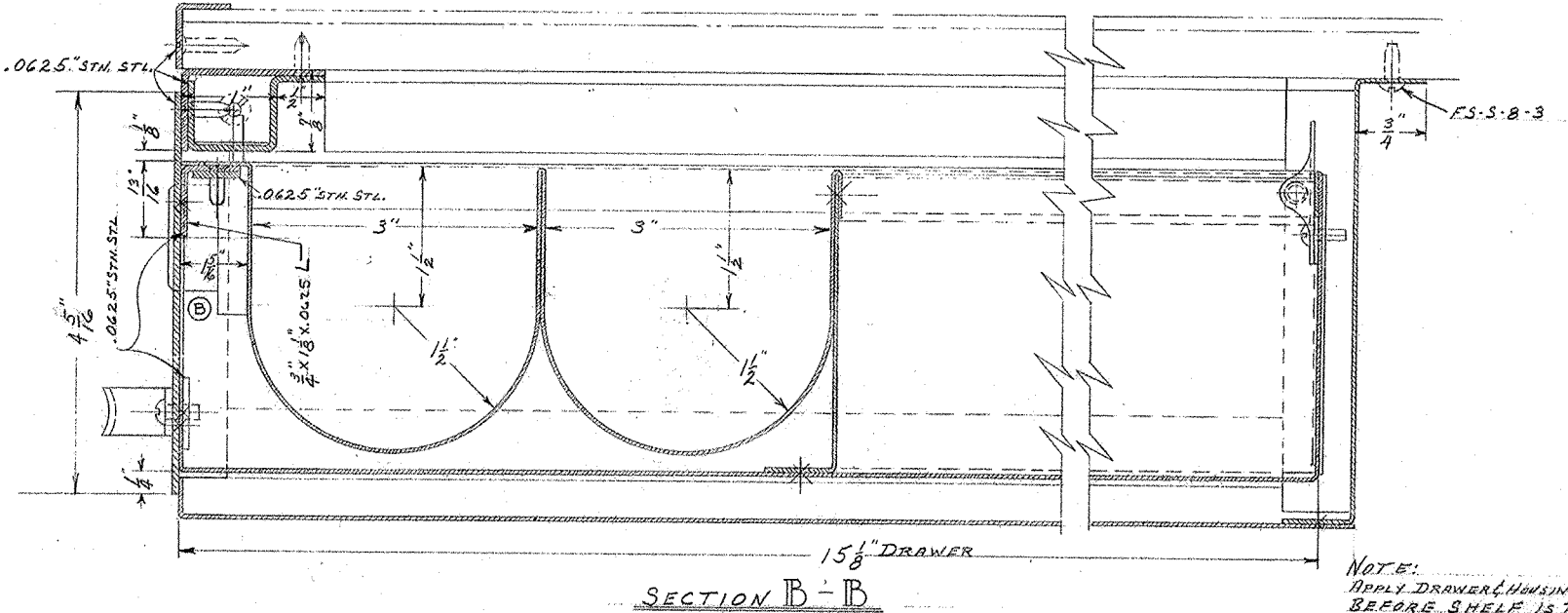


SECTION A-A

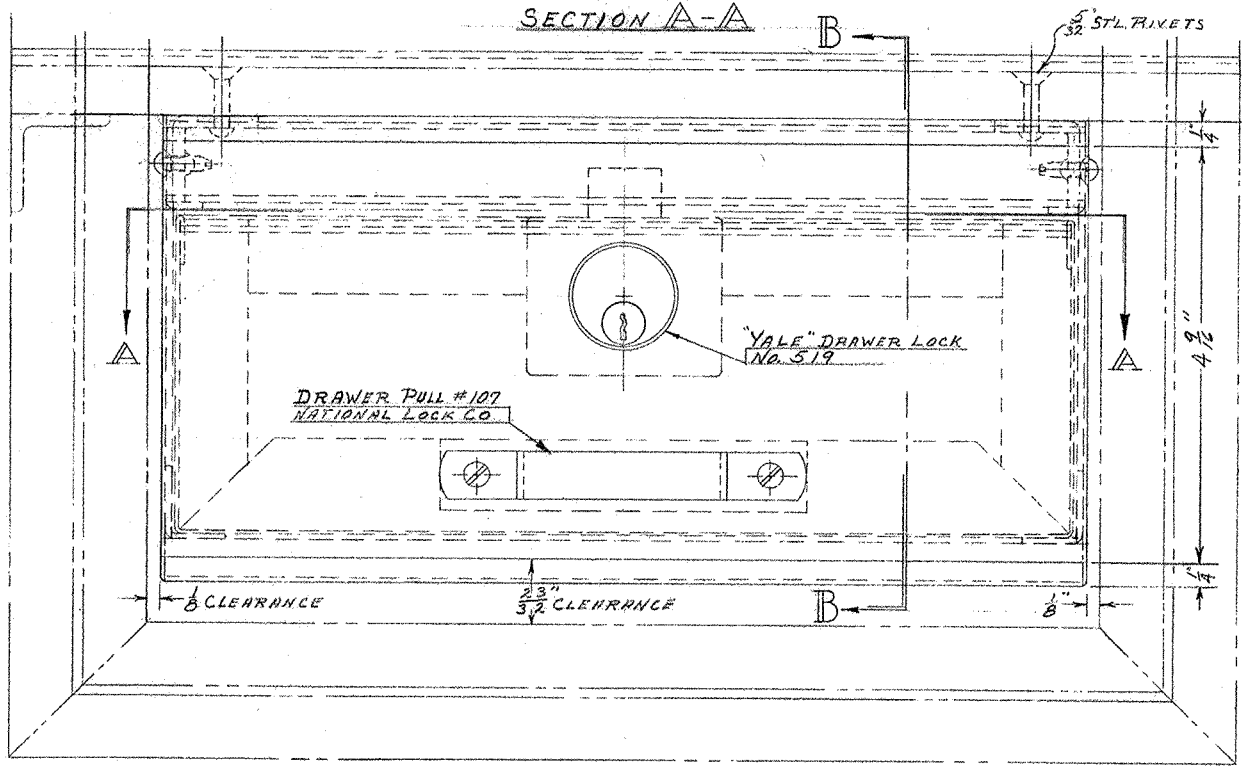


SECTION C-C

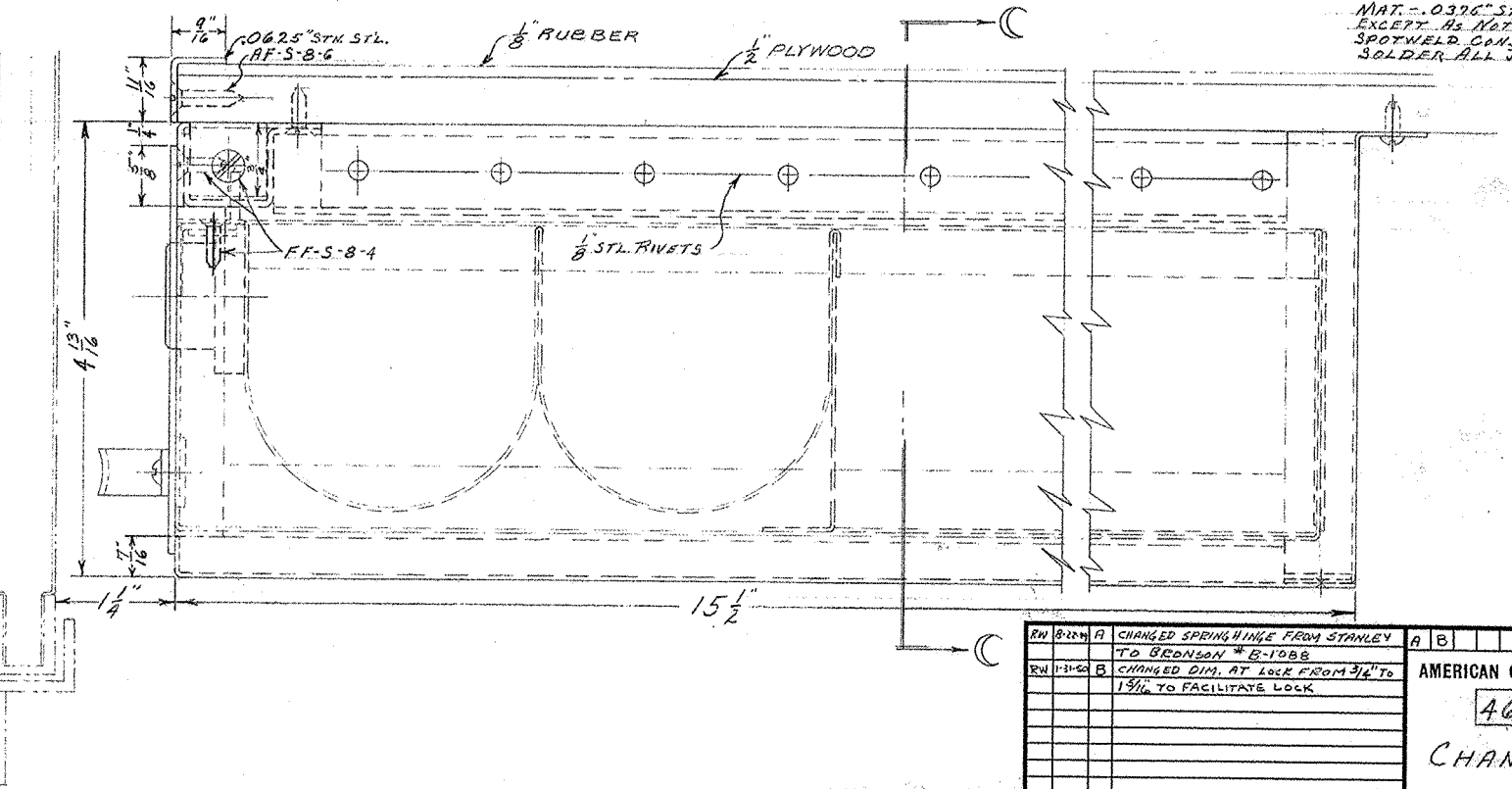


SECTION B-B

NOTE:
 APPLY DRAWER HINGING TO SHELF
 BEFORE SHELF IS PUT IN
 LINEN LOCKER DWG # 5675615
 MAT. -.0375" STAINLESS STEEL
 EXCEPT AS NOTED
 SPOTWELD CONSTRUCTION
 SOLDER ALL JOINTS.



SECTION A-A



SECTION B-B

REV	BY	DATE	DESCRIPTION	APP
1	AW	8-22-49	CHANGED SPRING HINGE FROM STANLEY TO BRONSON # B-1088	
2	AW	8-22-49	CHANGED DIM. AT LOCK FROM 3/16" TO 1/8" TO FACILITATE LOCK	

SHOP MARK	NO. PER CAR	LOT
		36 8124

AMERICAN CAR AND FOUNDRY CO.
 4675652
 CHANGE DRAWER
 A.C.F.
 3-22-49