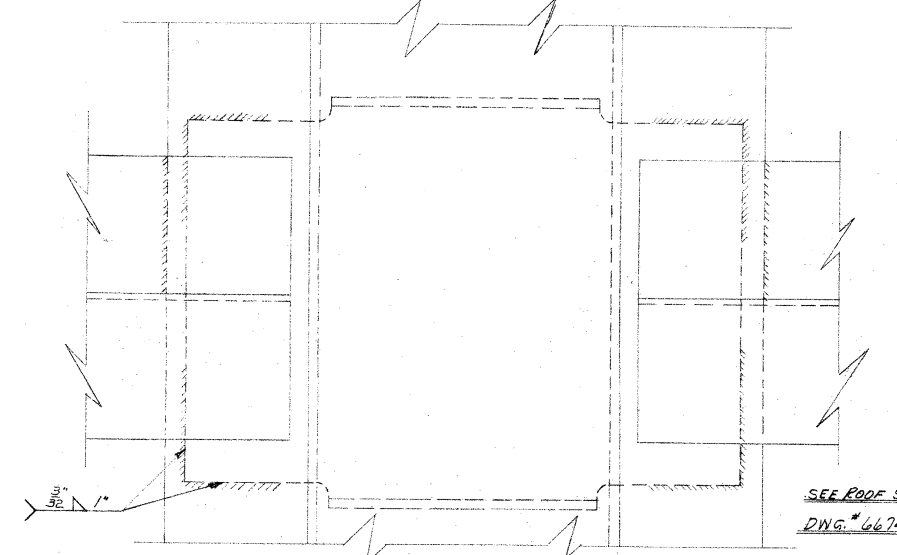
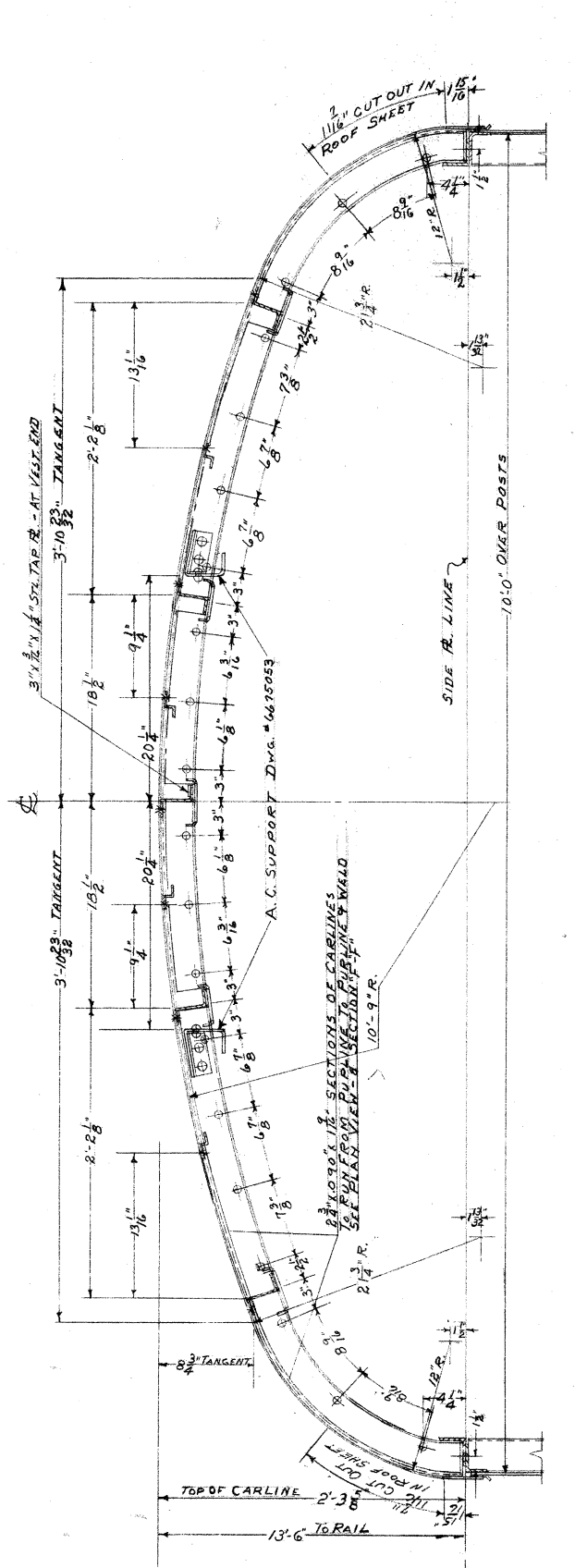
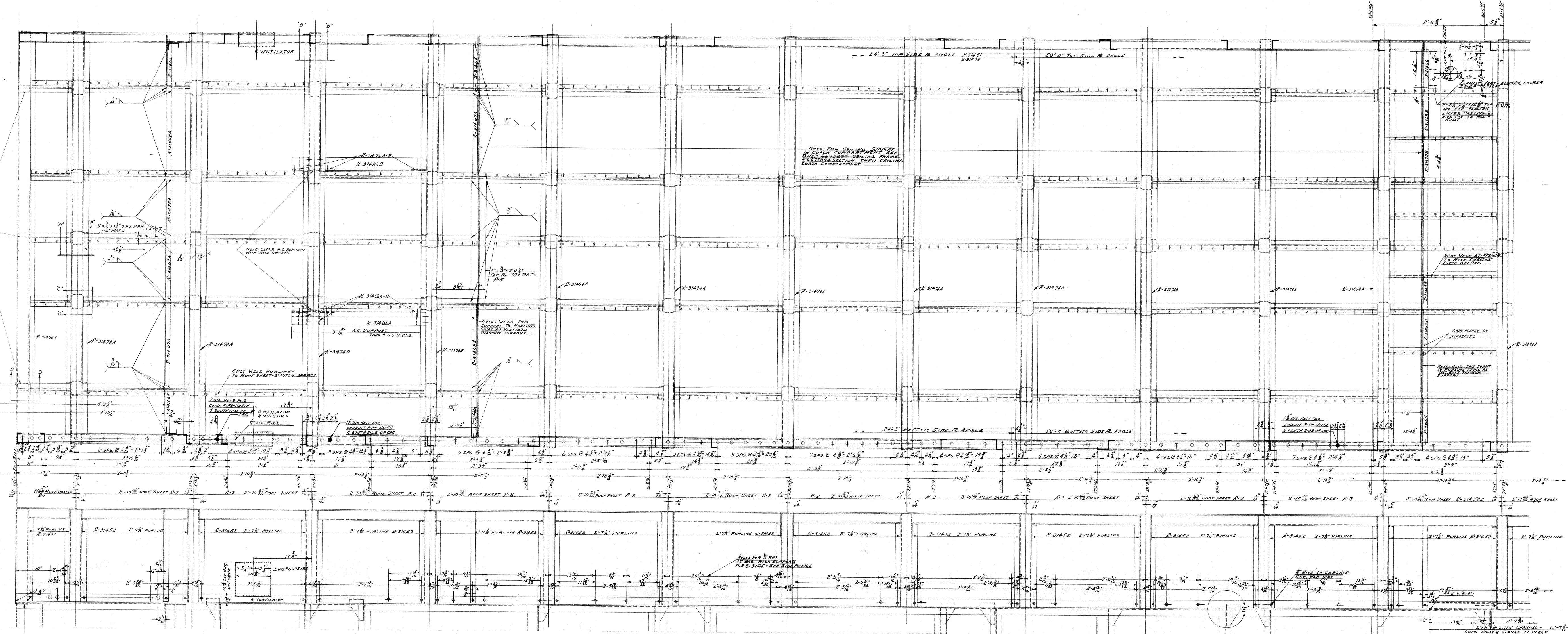
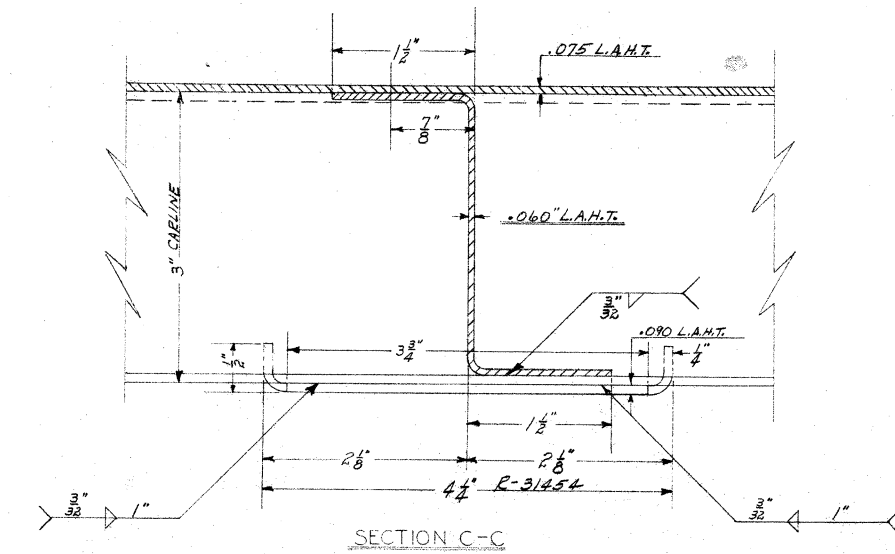


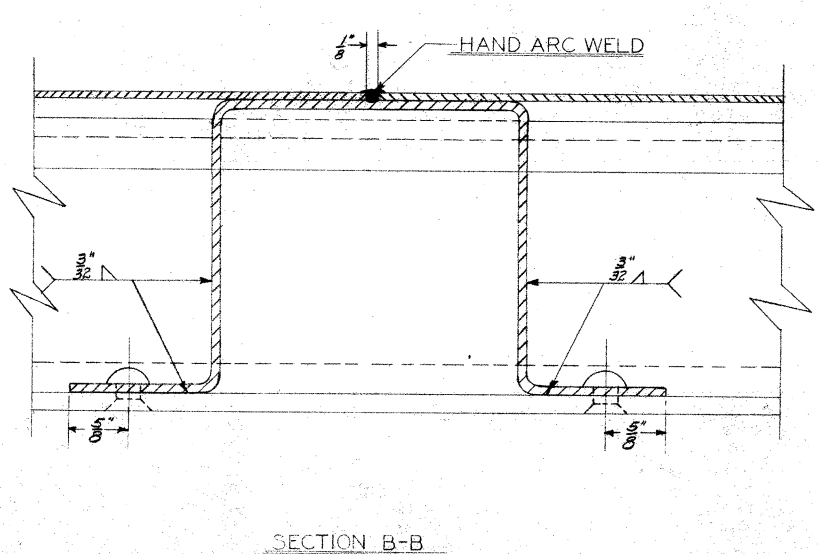
105' LIGHT ST. PRESSING SECTION D-D WELD TO CARLINE PRESSING TO BE IN LINE WITH WEB OF PURLINE - AN FLANGE ON PRESSING TURRED SAME AS LOWER FLANGE OF PURLINE R-31474-B



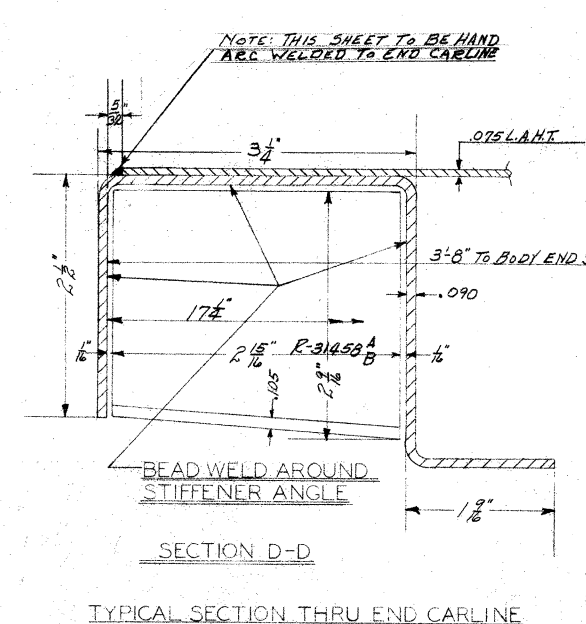
SECTION A-A
TYPICAL SECTION AT CARLINE AND PURLINE



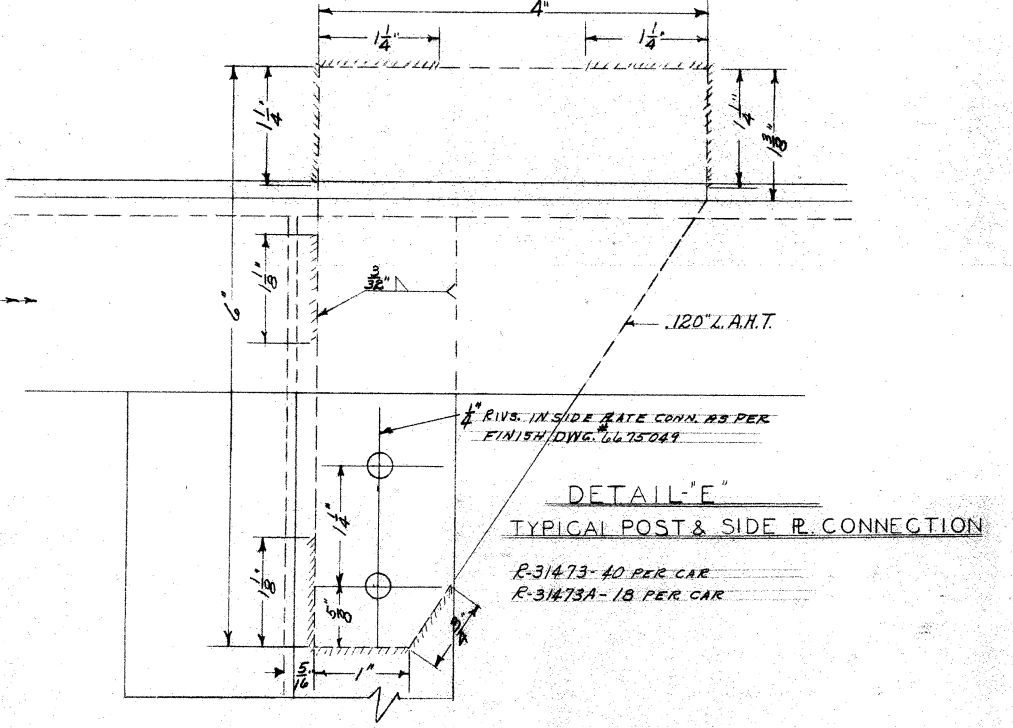
SECTION C-C
TYPICAL SECTION THRU PURLINE



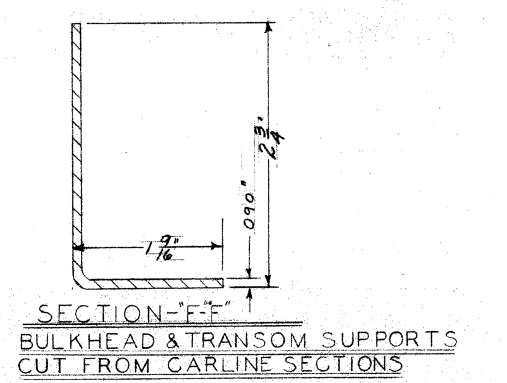
SECTION B-B
TYPICAL SECTION AT SIDE PLATE



SECTION D-D
TYPICAL SECTION THRU END CARLINE



DETAIL E
TYPICAL POST & SIDE R. CONNECTION
R-31473 - 40 PER CAR
R-31474 - 15 PER CAR



SECTION F-F
BULKHEAD & TRANSOM SUPPORTS
CUT FROM CARLINE SECTIONS

APPROVED	DATE	BY	FOR
AMERICAN CAR AND FOUNDRY CO.			
6675022			
ROOF FRAMING			
WEST END			
A.C.F.			