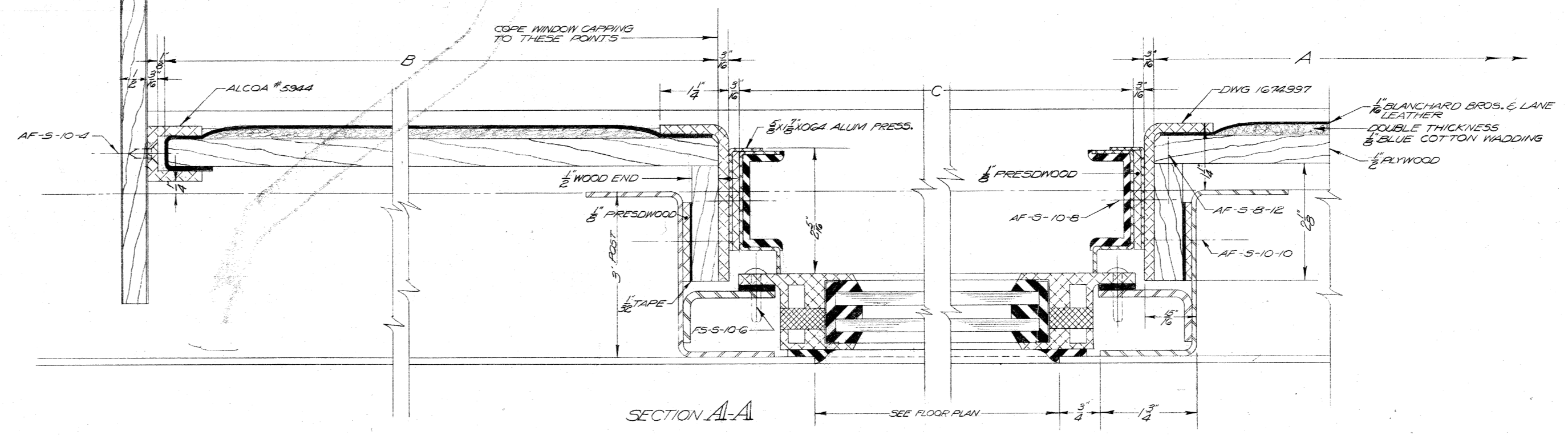
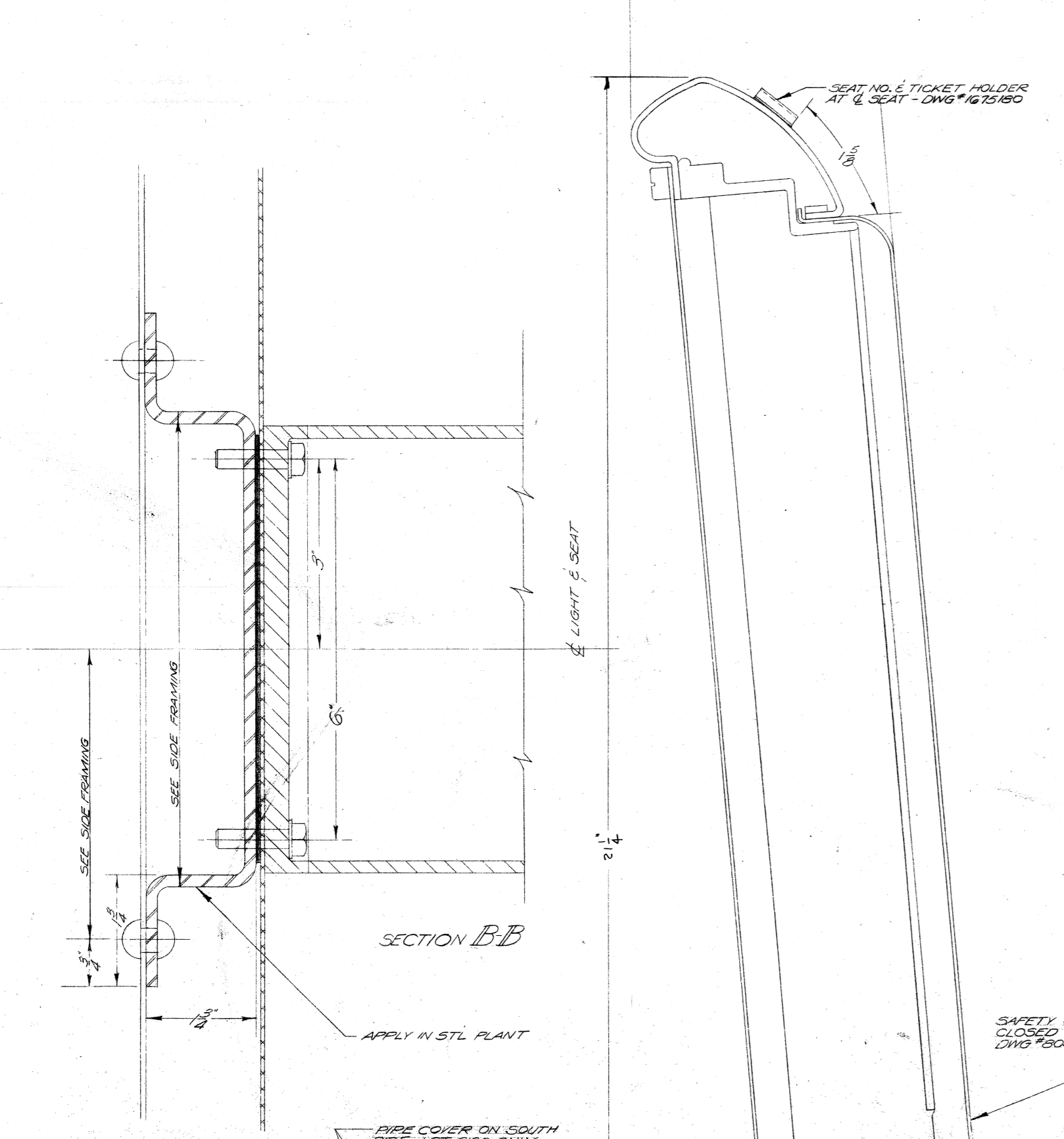
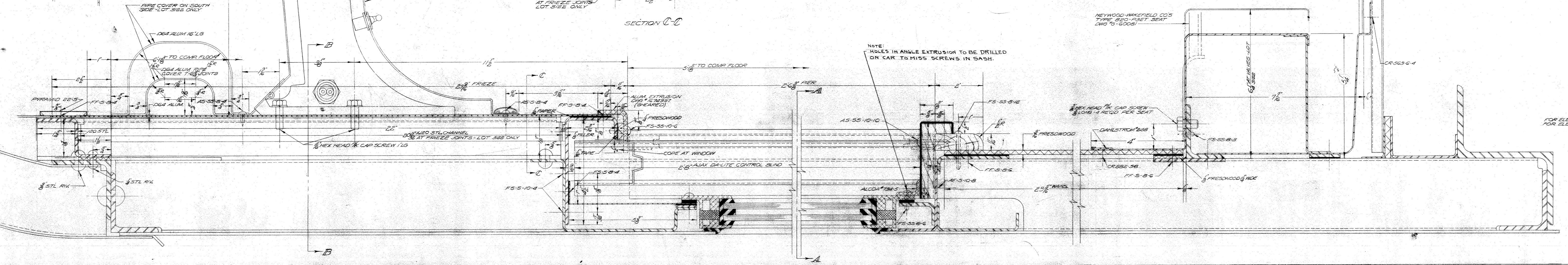
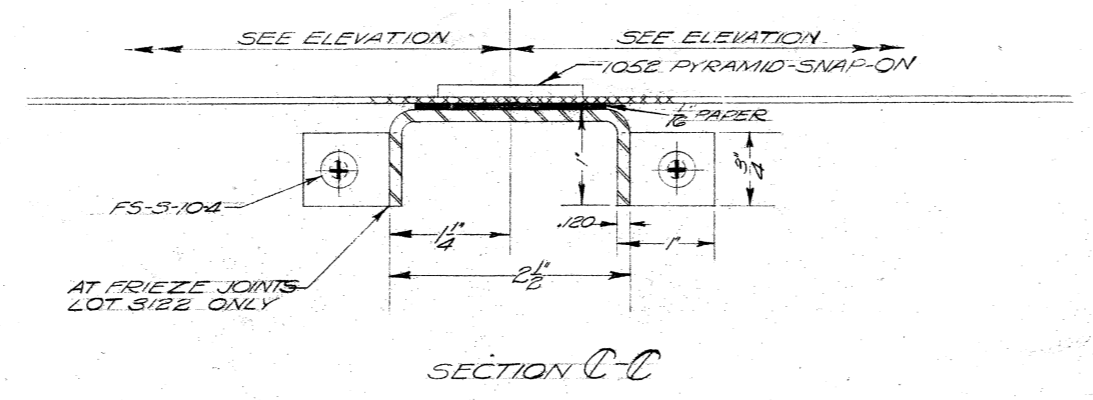
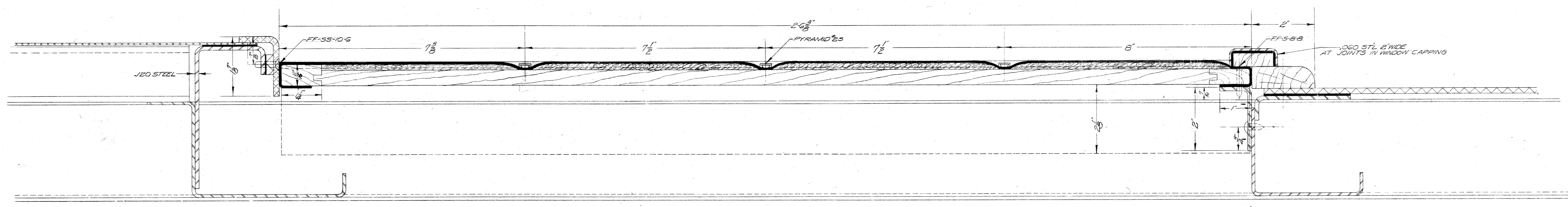


15" TO CEILING
6" TO TOP OF COMPOSITION FLOOR



| LOT | A CENTER PIERS | B END PIERS | C ALUM BLINDS |
|------|------------------|--------------------------|------------------|
| 3122 | 12 PER CAR - 178 | 6 PER CAR - 125 (1 PAIR) | 14 PER CAR - 548 |
| 3124 | 4 PER CAR - 178 | 2 PER CAR - 125 (1 PAIR) | 6 PER CAR - 548 |



NOTE: HOLES IN ANGLE EXTRUSION TO BE DRILLED ON CAR TO MISS SCREWS IN SASH.

FOR ELEVATION OF SIDE FINISH SEE DWG 5675033-101-364
FOR ELEVATION OF SIDE FINISH SEE DWG 5675033-101-364

FC 3124
PC 3124
LOT
66 75 021
SEE THROUGH SEAT FINISH
SEARCH COMPARTMENT
12-24-44