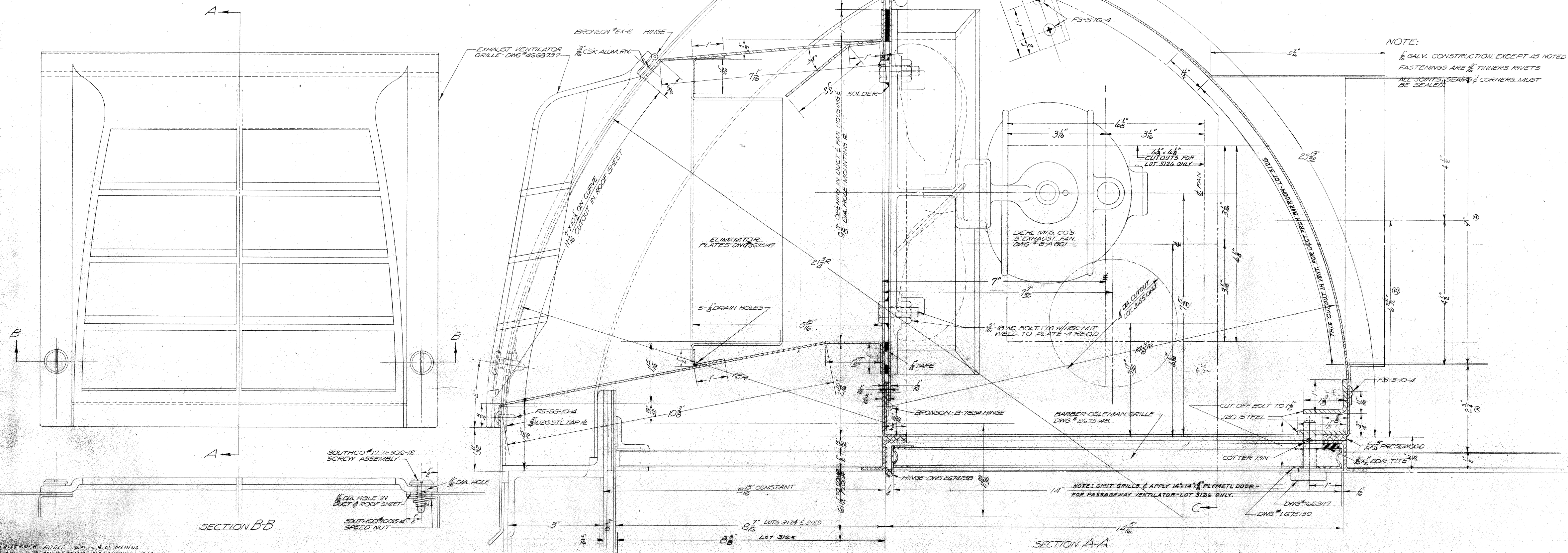
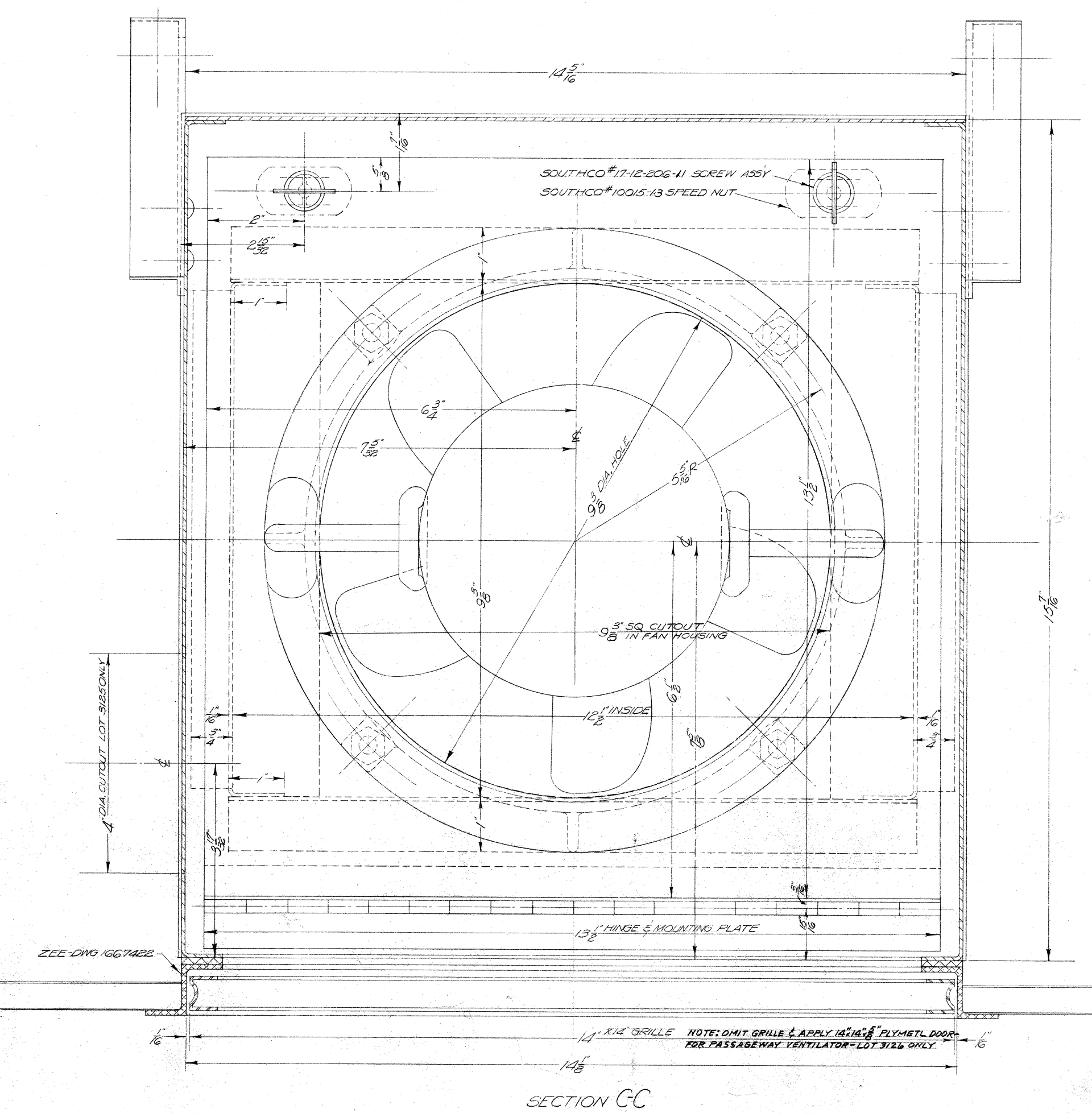


PLAN VIEW OF DUCT & FAN HOUSING
HALF-SIZE



SECTION A-A

SECTION B-B



SECTION C-C

NOTE:
GALV. CONSTRUCTION EXCEPT AS NOTED
FASTENINGS ARE # 8 TINNER'S RIVETS
ALL JOINTS, SEAMS & CORNERS MUST
BE SEALED

NOTE: OMIT GRILLE & APPLY 1/4\"/>

NOTE: OMIT GRILLE & APPLY 1/4\"/>

3	PLATE
2	PLATE
2	PLATE
1	PLATE
1	PLATE
1	PLATE
1	PLATE

66-125-135
EXHAUST VENTILATOR
IN TOILETS