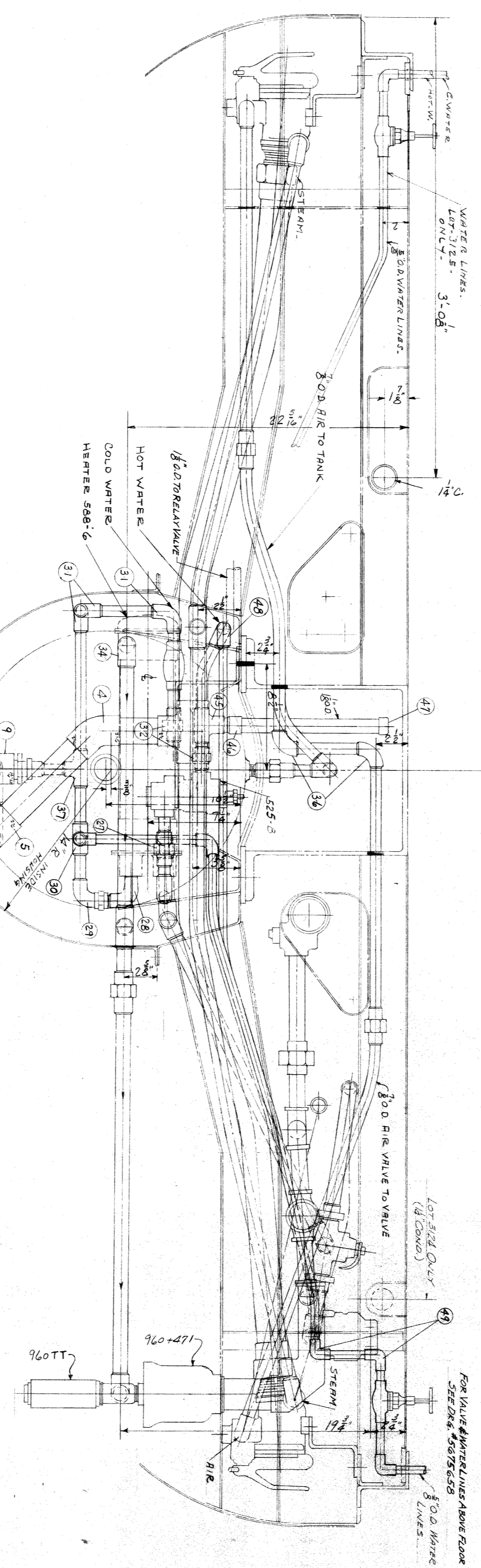
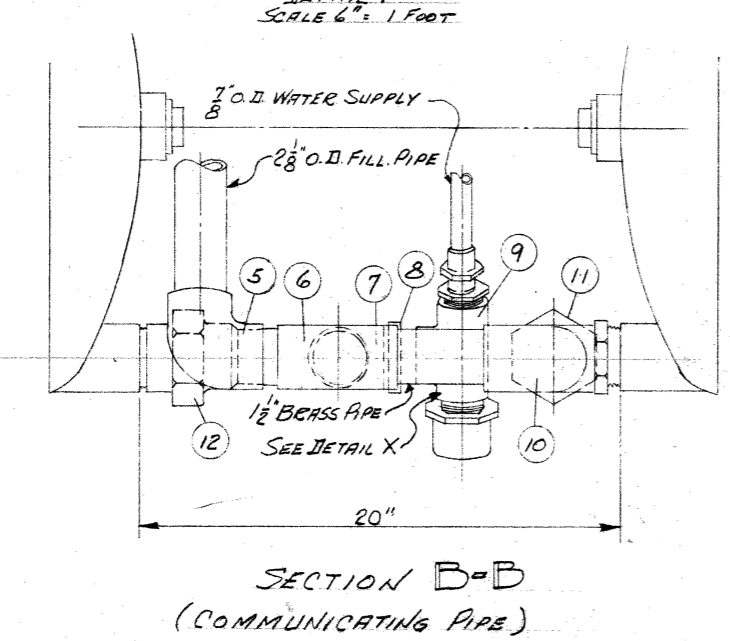
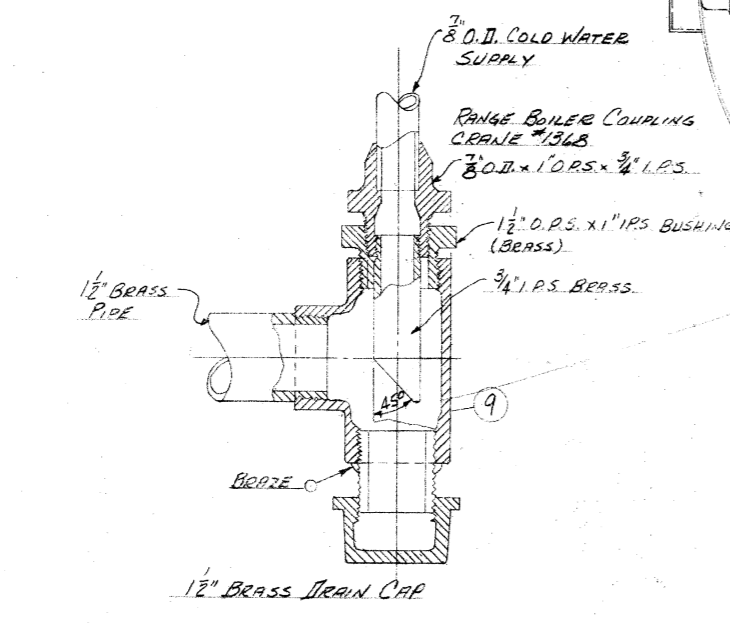
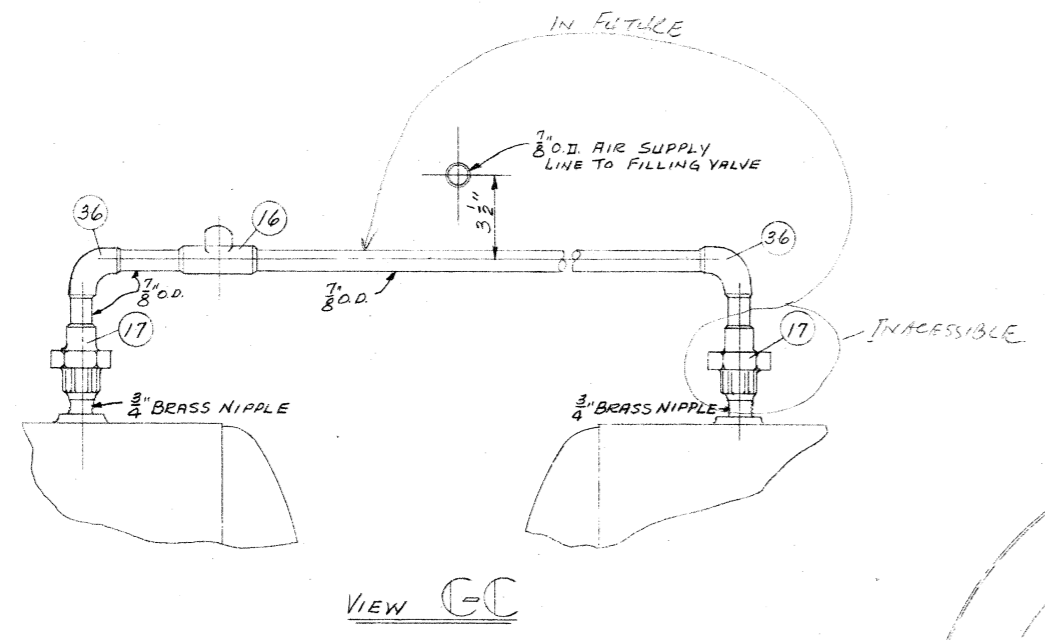


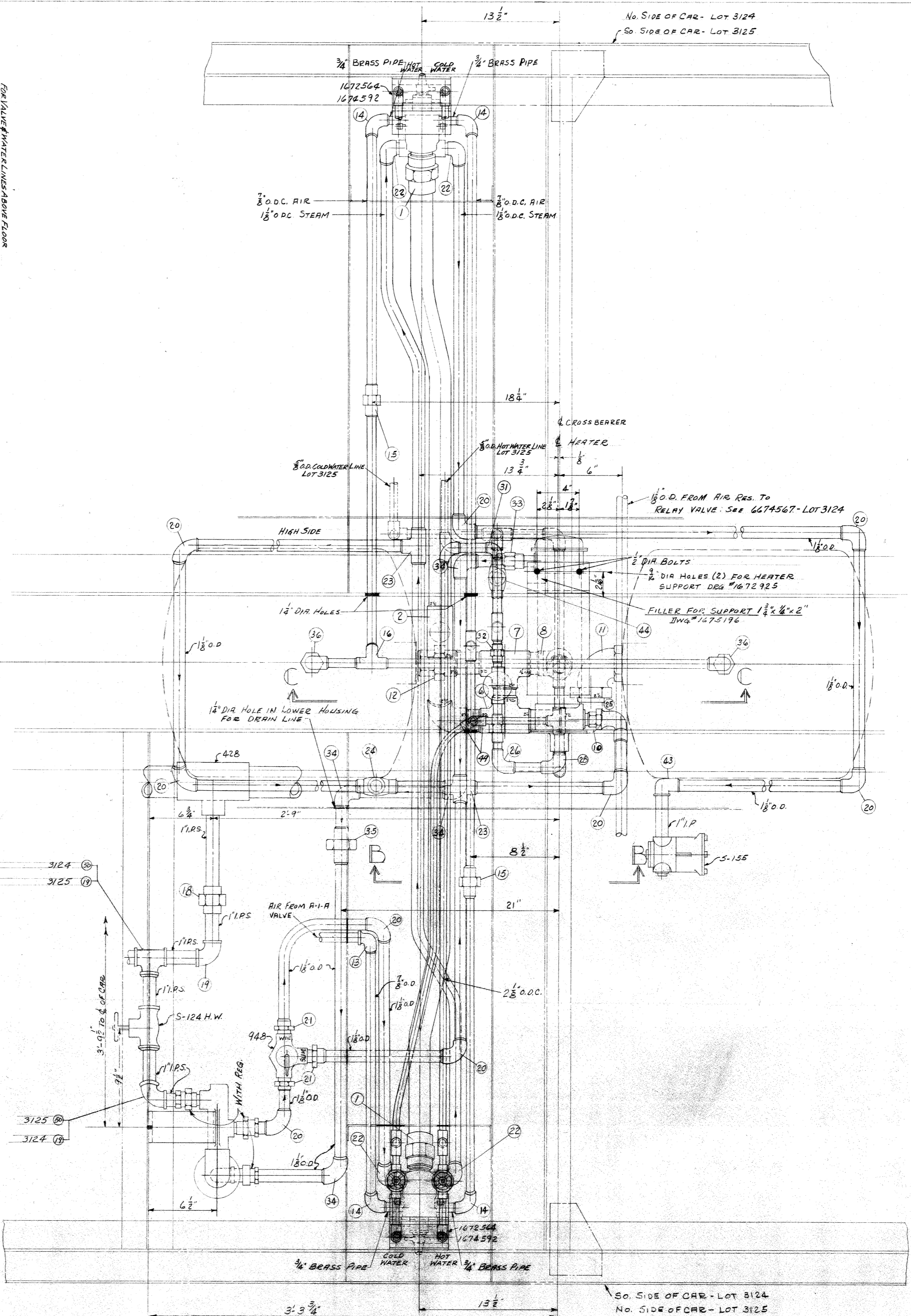
PART NO.	DESCRIPTION	REMARKS
COMMUNICATING PIPE BETWEEN TANKS		
1	1/2" O.D. X 1/2" I.P.S. UNION	
2	1/2" O.D. X 1/2" I.P.S. TEE	
4	1/2" O.D. X 1/2" I.P.S. ELBOW	
5	1/2" O.D. X 1/2" I.P.S. ELBOW (CAST)	CHINA
6	1/2" O.D. X 1/2" I.P.S. TEE	
7	1/2" O.D. X 1/2" I.P.S. TEE	CHINA
8	1/2" O.D. X 1/2" I.P.S. (BRASS) BUSHING	
9	1/2" I.P.S. X 1/2" I.P.S. (BRASS) TEE	
10	1/2" O.D. X 1/2" I.P.S. STREET ELBOW (CAST)	
11	1/2" O.D. X 1/2" I.P.S. UNION ELL	
12	1/2" O.D. X 1/2" I.P.S. UNION	
AIR FROM A-I-A VALVE TO TANKS		
13	1/2" I.P.S. X 1/2" O.D. 90° ELL	
14	1/2" O.D. X 1/2" I.P.S. 90° ELL	
15	1/2" O.D. UNION	
16	1/2" O.D. TEE	
17	1/2" O.D. X 1/2" I.P.S. UNION	
36	1/2" O.D. X 1/2" I.P.S. 90° ELL	
STEAM SUPPLY FROM TANKLINE THRU REG. TO HEATER		
18	1" I.P.S. FEMALE UNION	
19	1" I.P.S. 90° ELL	
20	1" O.D. X 1" I.P.S. 90° ELL	
21	1" O.D. X 1" I.P.S. COUPLING	
22	1" O.D. X 1" I.P.S. STREET ELL	
23	1" O.D. TEE	
24	1" O.D. SWING CHECK VALVE	CHINA
25	1" O.D. X 1" I.P.S. UNION ELL 90°	
26	1" O.D. X 1" I.P.S. 90° ELL	
27	1" O.D. X 1" I.P.S. UNION	
43	1" O.D. X 1" I.P.S. ELL	
HOT & COLD WATER FROM HEATER TO MIX VALVE TO CAR		
28	1" O.D. X 1" I.P.S. STREET ELL	
29	1" O.D. X 1" I.P.S. UNION ELL 90°	
30	1" O.D. X 1" I.P.S. X 1" I.P.S. TEE	
31	1" O.D. X 1" I.P.S. TEE	
32	1" O.D. X 1" I.P.S. UNION	
44	1" O.D. SWING CHECK VALVE	CHINA
45	1" O.D. X 1" I.P.S. X 1" I.P.S. TEE	
46	1" O.D. X 1" I.P.S. X 1" I.P.S. COUPLING	
47	1" O.D. X 1" I.P.S. COUPLING	
48	1" O.D. X 1" I.P.S. X 1" I.P.S. REDUCING ELL	
49	1" O.D. X 1" I.P.S. 90° ELL	
DRAIN FROM HEATER TO REGULATOR		
33	1" O.D. X 1" I.P.S. UNION	
34	1" O.D. X 1" I.P.S. 90° ELL	
35	1" O.D. UNION	
37	1" O.D. X 1" I.P.S. X 1" I.P.S. TEE	
50	1" I.P.S. TEE	

LEGEND
 O.P.S. = OUTSIDE PIPE SIZE
 I.P.S. = INSIDE PIPE SIZE
 O.D.C. = OUTSIDE DIAMETER COPPER



FOR VALVE WATER LINES ABOVE FLOOR
 SEE DWG. 6675571

FOR VALVE WATER LINES ABOVE FLOOR
 SEE DWG. 6675569



GENERAL NOTES
 1- ALL O.D. DESCRIPTIONS ARE COPPER PIPE.
 2- THE OUTLET & DRAIN FITTINGS ON VALVE REG. 960 ARE TO BE FURNISHED WITH UNION BODY NO. 441-2-C. FOR 1 1/2\"/>

3124	3125
AMERICAN CAR & FRY CO.	
6675141	
400 GAL. DIAL WATER TANK PIPING DETAIL	
1-14-49	